



Model Processor User

Version 11.0.1.0

Installation Instructions

© 2025 INNEO Solutions GmbH



1	Installation Prerequisites	2
1.1	Creo Parametric	2
1.2	License Manager	2
1.3	Download area	2
2	Installing Model Processor	3
2.1	Update	5
2.2	Reconfigure	5
3	Installing Model Processor User	6
3.1	Update	7
3.2	Reconfigure	8
3.3	Integration in Creo and additional configuration	8
4	FAQ	10
5	Copyright	12

1 Installation Prerequisites

To use GENIUS TOOLS Model Processor User in your IT environment, some preconditions must be met.

For more detailed information on compatible software versions, please refer to the PDF document *INNEO Solutions GmbH Software: Platform Support*.

1.1 Creo Parametric

GENIUS TOOLS Model Processor User is a Creo auxiliary application. It requires an installed version of Creo.

Model Processor User supports the 64 Bit version of Creo 4.0 - 7.0. We recommend to use the newest maintenance release of the respective Creo version.

1.2 License Manager

For license management purposes, your GENIUS TOOLS License Manager (FlexNet Server) must either be installed locally or be reachable through your network.

1.3 Download area

The software packages required for Model Processor installation

- License Manager (FlexNet-Server)
- GENIUS TOOLS Model Processor
- GENIUS TOOLS Model Processor User

can be downloaded from the GENIUS TOOLS download area on the INNEO Solutions GmbH website.

The download area is located at <https://www.inneo.de/de/services/genius-tools-downloads.html>.

2 Installing Model Processor

Before installation, make sure that GENIUS TOOLS License Manager is available locally or via the network, and contains the license for Model Processor.

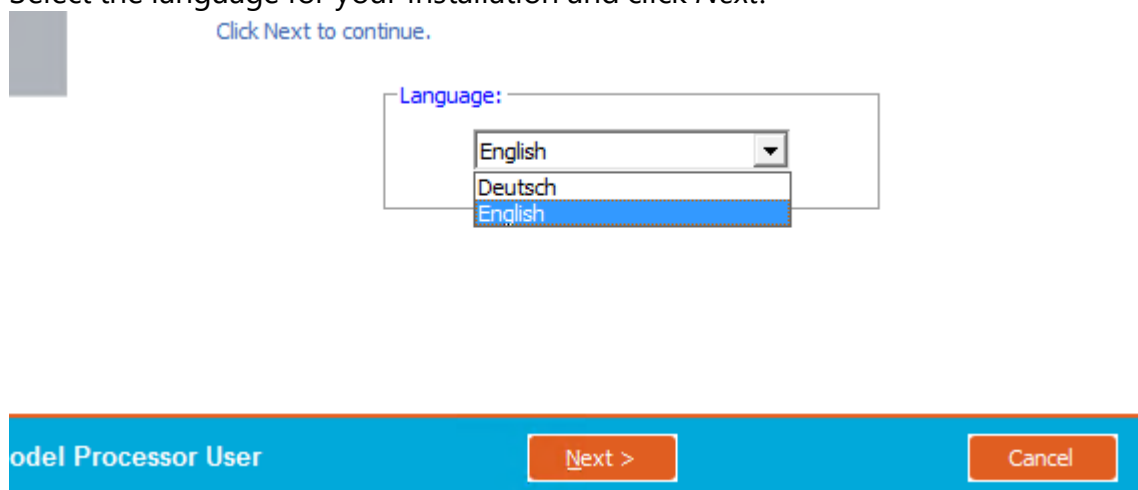
To install Model Processor, download the software package GENIUS TOOLS Model Processor.

A ZIP archive with the software will be saved on your computer.

The ZIP archive contains the installation file *setup_GT-ModelProcessor_<Version>.exe*.

Step-by-step installation routine

1. Start the installation file. Windows asks you to confirm that the installation routine is allowed to make changes to your computer.
2. Confirm by clicking *OK*. The installation dialog is displayed.
3. Select the language for your installation and click *Next*.



4. Read and accept the license agreement on the next page and click *Next*.

If you accept the terms of the agreement, click the check box below. You must accept the agreement to install GENIUS TOOLS Model Processor 5.7. Click Next to continue.

☒ I accept the terms of the License Agreement



5. Select the start menu folder to place the program shortcuts in and click *Next*.

Select the Start Menu folder in which you would like to create the program's shortcuts. You can also enter a name to create a new folder.

6. Select the target directory for the installation. The storage requirements are automatically calculated and displayed. Click *Next*.

7. Specify whether the example configuration should be installed, and specify the MPZ directory.

☒ Install example files

.mpz folder: ...

Please note: Some features of the Model Processor require read access for users in the directory structure in order to work properly. Please pay attention to this requirement!

8. On the same dialog page, configure the licensing.

If you manage your licenses with License Manager, enter the license server and type of license (*core*, *report* or *rework*).

If the license server is installed locally, enter *7766@localhost*. If the license server is in your network, enter the corresponding port number and server name (*Port@ServerName*).

9. Click *Install*. Model Processor will now be installed in the selected directory and the installation summary is shown.

10. Click *Finish*.

2.1 Update

If Model Processor is already installed and you want to perform an update, you can follow the steps for a new installation. Minor updates e.g. from Y.0.1.0 to Y.0.2.0 can also be installed inside of Model Processor by the update notification.

The configuration is not updated by the setup process in order to protect company specific configuration settings from overwriting. To update the configuration, you can find new configuration options in the file *mp_conf_default.cfg* in the directory *<InstallationDirectory>\conf*.

Additional information can be found in the help. You can use the online help (directly in Model Processor) or the PDF help (under *<InstallationDirectory>\help*) to get additional information for new configuration settings.

2.2 Reconfigure

In the *<InstallationDirectory>\bin* subdirectory, you can find the file *Reconfigure.exe*.

If you want to change the entry for the license server, the licenses or the MPZ folder, you can use this executable file.

3 Installing Model Processor User

Before installation, make sure that GENIUS TOOLS License Manager is available locally or via the network, and contains the license for Model Processor User.

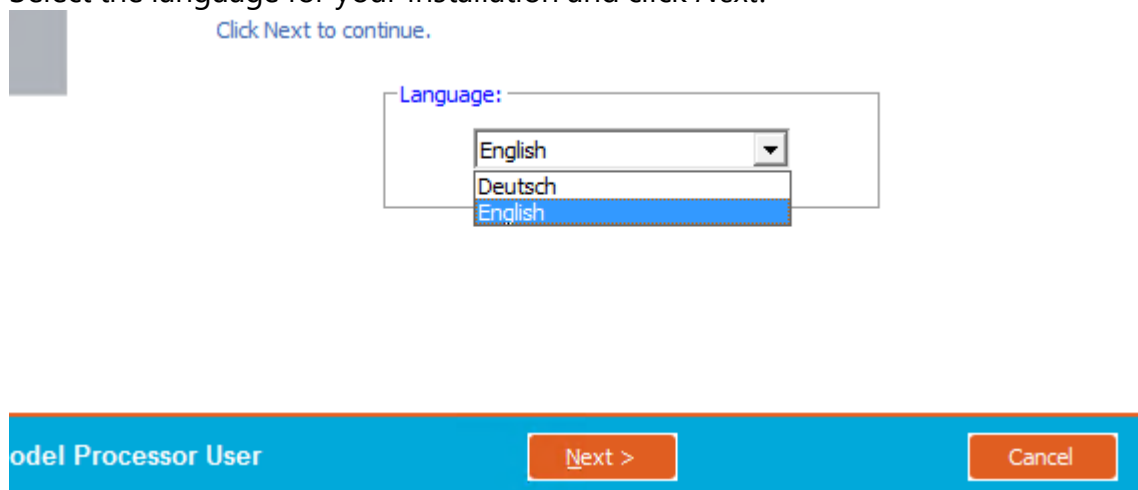
To install Model Processor, download the software package GENIUS TOOLS Model Processor User.

A ZIP archive with the software will be saved on your computer.

The ZIP archive contains the installation file *setup_GT-ModelProcessorUser_<Version>.exe*.

Step-by-step installation routine

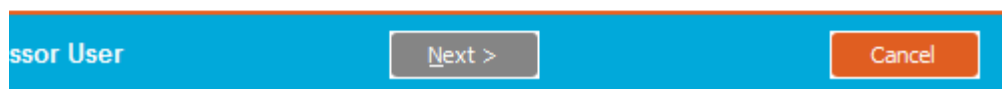
1. Start the installation file. The installation dialog is displayed.
2. Select the language for your installation and click *Next*.



3. Read and accept the license agreement on the next page and click *Next*.

If you accept the terms of the agreement, click the check box below. You must accept the agreement to install GENIUS TOOLS Model Processor User. Click Next to continue.

☐ I accept the terms of the License Agreement



4. Select the target directory for the installation. The storage requirements are automatically calculated and displayed.
If you are using Startup TOOLS, install Model Processor User into your operating environment in the *apps/mpuser* directory.

Click *Next*.

Destination Folder

C:\Program Files (x86)\GENIUS TOOLS\mpuser\ Browse...

Space required: 33.7MB
Space available: 8.7GB

Model Processor User < Back Next > Cancel

5. Enter the license server. If License Manager is installed locally, enter *7766@localhost*. If the license server is in your network, enter the corresponding port number and server name (*Port@ServerName*).



Please insert your license server (e.g. 7766@server_name) and choose the modules that should be started.

License server: 7766@localhost

.mpz folder: C:\Program Files (x86)\GENIUS TOOLS\mpu ...

6. Specify the MPZ directory.

Please note: Some features of the Model Processor require read access for users in the directory structure in order to work properly. Please pay attention to this requirement!

7. Click *Install*. Model Processor User will now be installed in the selected directory and the installation summary is shown.
8. Click *Finish*.

Please note: Model Processor User has to be integrated into Creo. For more information on how to do this, please refer to [Integration in Creo and Additional Configuration](#).

3.1 Update

If Model Processor User is already installed and you want to perform an update, you can follow the steps for a new installation.

The configuration is not updated by the setup process in order to protect company specific configuration settings from overwriting. To update the configuration, you can find new configuration options in the file *mpu_main_default.cfg* in the directory *<InstallationDirectory>\conf*.

Additional information can be found in the help. You can use the online help (directly in Model Processor User) or the PDF help (under *<InstallationDirectory>\help*) to get additional information for new configuration settings.

3.2 Reconfigure

In the *<InstallationDirectory>\bin* subdirectory, you can find the file *Reconfigure.exe*.

If you want to change the entry for the license server, the licenses or the MPZ folder, you can use this executable file.

3.3 Integration in Creo and additional configuration

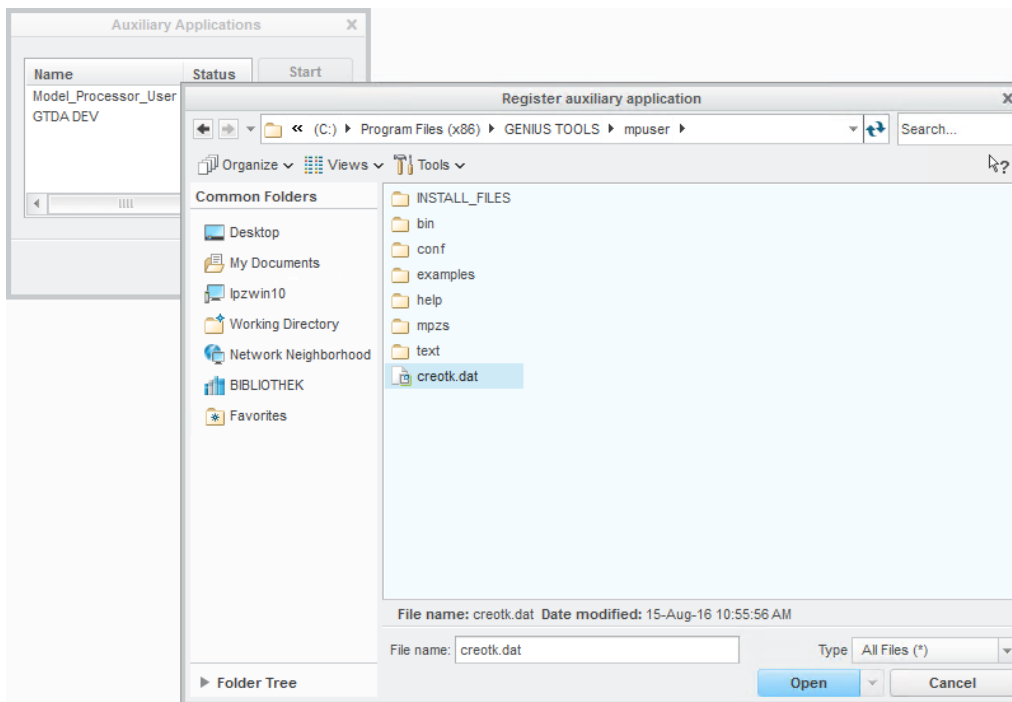
Integration into a Startup TOOLS environment

1. Install Model Processor User into your operating environment in the *apps/mpuser* directory.
2. Under *<InstallationDirectory>/conf*, edit the file *mpu_main.cfg*. You have to specify the license server. Adapt the following lines:
mpu_mpz_path – Path to a directory which contains at least one MPZ file.
mpu_lic_path – Address for GENIUS TOOLS License Manager. The address has to be specified as *PORT@IP* or *PORT@NAME*.
Example:

```
mpu_mpz_path=%SUT_ROOT_DIR%\configuration\mpuser\  
mpu_lic_path=7766@localhost
```
3. Start your project using GENIUS TOOLS Starter. The installation is finished. When you open a model in Creo, the ribbon menu includes the tab *Model Processor*.

Integration as stand-alone application

If you have installed Model Processor User as a stand-alone application, the software has to be registered manually after Creo start using the file *<InstallationDirectory>\creotk.dat* via *Tools -> Utilities -> Auxiliary Applications*.



Registering manually

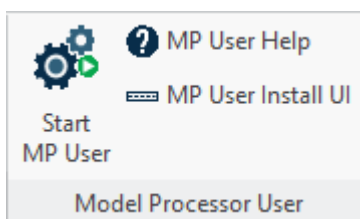
Additional settings

For information on further configuration settings in the file *mpu_main.cfg*, please refer to the help.

The help can be accessed directly from the application or under *<InstallationDirectory>/help*.

Model Processor User comes with an example configuration. If you decide to include the example configuration, the example files are placed in the selected MPZ directory during installation.

In order to be able to access the configured example actions in Creo, go to the *Model Processor* tab and select *MP User Install UI*. The buttons for the example actions are displayed.



*Model Processor User
ribbon*

4 FAQ

How can I check the available licenses?

You can access the administration UI of License Manager at *http://localhost:8091* or *http://<Server>:8091*. To make administrative settings, you can log in, the default account being *admin/admin*.

How can I configure the ports used by License Manager?

You can access the administration UI of License Manager at *http://localhost:8091* or *http://<Server>:8091*. To make administrative settings, you can log in, the default account being *admin/admin*.

To change the port under which the license server is available, select *Server Configuration - > License Server Configuration*.

To change the port for the GENIUS Vendor Daemon, select *Vendor Daemon Configuration*.

When you change a port, you have to stop and restart the corresponding service (*FlexNet Server for GENIUS TOOLS* or *GENIUS daemon*).

Model Processor is not connected to Creo. What should I do?

Model Processor automatically connects to Creo if exactly one Creo session is running.

The following conditions need to be met for the Creo connection to work:

- The environment variable PTCNMSPORT is not allowed to exist (it does not exist by default)
- No other asynchronous auxiliary applications are allowed to run
- PTC nmsd service must run (this is the rule)
- Port 1239 must be free, or be used by the PTC nmsd service.
- .NET Framework 2.0 must be installed

If there is still no connection:

- Close Creo and Model Processor
- Stop all processes via task manager – javaw, Model Processor, nmsd, xtop, procommmessage
- Start Creo
- Start Model Processor

Error message: The application could not be initialized properly (0xc0000135)!

Install Microsoft .NET Framework Version 1.1 Redistributable

(<http://www.microsoft.com/download/en/details.aspx?displaylang=en&id=26>)

Error message: To run this application, you must first install one of the following versions of the .Net Framework : v2.0.50727

Install Microsoft .NET Framework Version 2.0 Redistributable

64bit: <http://www.microsoft.com/download/en/details.aspx?displaylang=en&id=6523>

32bit: <http://www.microsoft.com/download/en/details.aspx?displaylang=en&id=1>

Where can I find the number of the currently used version of Model Processor User?

In the installation directory: The installation directory has one or more files *version-MPUx_0-Mxxx.txt*. These files contain the version number and update history.

In Creo: Open the MPU UI in Creo, then open the information window. The information window contains the version number.

5 Copyright

Copyright 2025 by:

INNEO Solutions GmbH

Rindelbacher Str. 42

73479 Ellwangen

This documentation is a product of INNEO Solutions GmbH, all rights reserved.

Without prior written consent of an authorized representative of INNEO Solutions GmbH it must not be copied, photocopied, reproduced, translated, recited, or converted to electronic or machine-readable form in whole or in part. Unauthorized use of the documentation can lead to claims for liquidated damages or criminal prosecution. INNEO Solutions GmbH does not accept liability for possible faulty information in this documentation and the consequences resulting from such.

Note on registered trademarks:

The majority of software, hardware and brand names mentioned in this documentation are registered trademarks of the respective software manufacturer.

Registered trademarks of INNEO Solutions GmbH:

Startup TOOLS ENGINEERING PERFORMANCE, GENIUS TOOLS, INNEO That's IT.