

GENIUS TOOLS Starter

Version 12.0.1.0

Description of all functions

© 2025 INNEO Solutions GmbH

Contents

I. GENIUS TOOLS Starter

1. Central administration of operating environments	2
2. Configuration of projects	3
3. Project selection for users	4
4. Editing of Creo configuration files	5

I. GENIUS TOOLS Starter

GENIUS TOOLS Starter is used to define all settings of an operating environment centrally on an administration computer. From there, the operating environment is synchronized to the user's computer. Alternatively, an operating environment can also be used locally or as a network folder.

Within an operating environment, users are given access to pre-configured projects. Such a Starter project has a centrally administered configuration – e. g. for license servers, configuration and batch files, language selection, environment variables etc. – as well as company-specific files, e. g. Creo object data.

GENIUS TOOLS Starter consists of the following components:

1. Central management of operating environments (conducted with the program *Environment Administrator*)
2. Project selection for users (with *Starter App*)
3. Configuration of projects (with *Project Configurator*)
4. Editing of configuration files (with *Config Editor*)

The product GENIUS TOOLS Starter is part of the product package Startup TOOLS.

1. Central administration of operating environments

Operating environments are created and administered centrally. Production, test and development environments can be run simultaneously. The required operating environments are synchronized to the user computers.

The following functions are available:

- Operating environments are created with a graphical user interface and synchronization and license settings are defined (with *GENIUS TOOLS Environment Administrator*).
- Working environments can be linked to the Git version control system.
- The data synchronization of operating environments can be set up with satellites (mirror server) to reduce the network load. Sites that have a slow connection to the main server can thus access the more accessible satellite and significantly reduce the time required for data synchronization.
- Administrators can send messages to users.

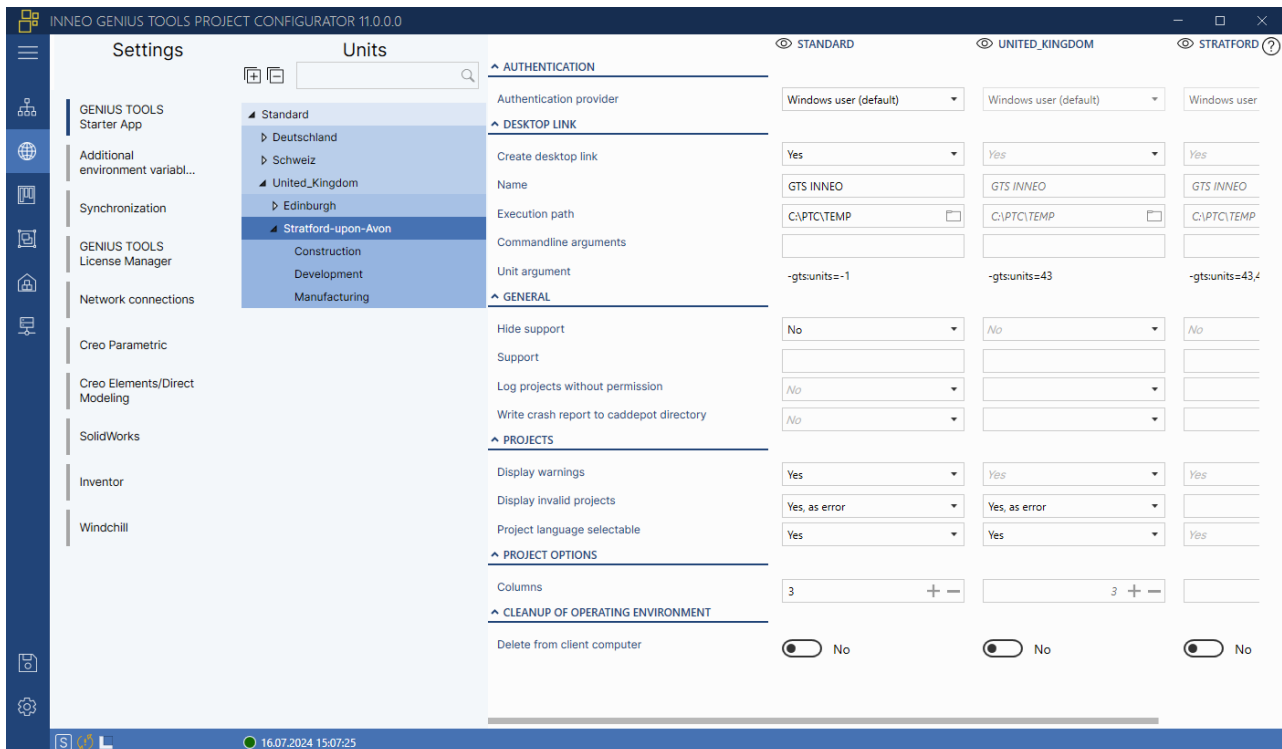
2. Configuration of projects

Administrators define the settings of all projects in an operating environment in the configuration component GENIUS TOOLS Project Configurator. There are different types of projects:

- CAD projects (Creo Parametric, Creo Elements/Direct Modeling, Solidworks, Inventor, AutoCAD)
- projects of other software products
- auto projects (e. g. Mathcad)

The following functions are available:

- define global settings for all projects
- configure projects differently for different user groups, e. g. company-specific sites or departments
- start additional batch files per project or for multiple projects
- restrict project access to certain user groups
- assign role-based access rights for specific functions, e. g. for license borrowing or language selection
- map an organization in a tree structure
- automate changes to user data by accessing Windows user management (LDAP query)



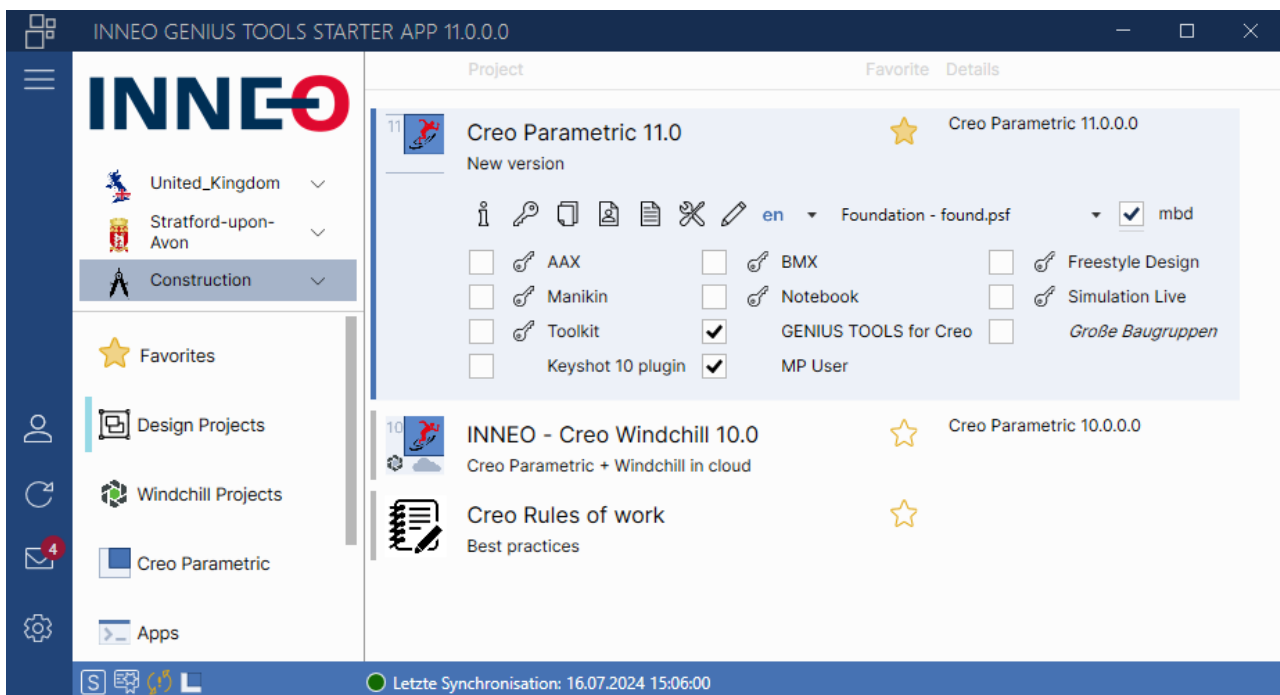
- create and configure Creo Parametric projects
 - Creo settings (language, project and data directory, licenses and more)
 - Windchill settings
 - environment variables

- Creo startkeys (license packages)
- PTC license servers
- synchronize Creo Parametric setups to user computers, from which they can be started manually or automatically
- create and configure projects for of other CAD-applications (for Creo Elements/Direct Modeling, SolidWorks, Inventor)
 - settings (language, project and data directory)
 - environment variables
- create and configure projects for AutoCAD, AutoCAD Architecture, AutoCAD Mechanical and AutoCAD LT
- manage synchronization servers (satellites) and monitor their availability in a web browser
- compare configuration files (config.pro files) of two projects directly and edit them in a special graphical editor with autocomplete function

By default, GENIUS TOOLS Starter authenticates Windows users, so there is no separate login process. However, you can choose other systems to authenticate GENIUS TOOLS Starter. For the integration of Windchill there are predefined settings

3. Project selection for users

Users can open centrally configured projects to which they have been granted access, as well as see details about the directories and configuration files in use in the user component GENIUS TOOLS Starter App.



The following functions are available to users component GENIUS TOOLS Starter App, if access rights are granted:



- starting a pre-configured Starter project with the possibility to select
 - program language
 - license extensions and addon programs as well as
 - for Creo Parametric: a Creo startkey (license package)
- selection can be saved as a custom project
- view availability of licenses
- license borrowing for mobile work
- deactivation of configuration blocks
- creating a backup copy for user-specific settings
- create user-defined project collection with favorite projects

By default, GENIUS TOOLS Starter authenticates Windows users so that no separate login process takes place. However, you can also select other systems for the authentication of GENIUS TOOLS Starter. For Windchill user authentication, there are predefined settings for connecting to servers with and without SSO setups.

4. Editing of Creo configuration files

Administrators can directly compare and edit configuration files and configuration blocks using the separate program GENIUS TOOLS Config Editor.

The following functions are available:

- searching and replacing configuration options and entries
- syntax highlighting and display of errors
- batch mode for editing multiple files
- for Creo Parametric:
 - listing of duplicate, hidden and unknown configuration options
 - autocompletion and suggestion function for easy editing of configuration options
 - display of config.pro files and config.sup files for each Creo version



Copyright 2025 by:
INNEO Solutions GmbH
IT-Campus 1
73479 Ellwangen
Germany

This documentation is protected by copyright. All rights reserved. Without prior written consent of an authorized representative of INNEO Solutions GmbH it must not be copied, photocopied, reproduced, translated, communicated or converted to electronic or machine readable form in whole or in part. The unauthorized use of the documentation can lead to a claim for liquidated damages or legal prosecution. INNEO Solutions GmbH does not accept liability for possible faulty information in this documentation and the consequences resulting from such.

Note on registered trademarks: Most of the software, hardware and trade names mentioned in this documentation are also registered trademarks of the respective software manufacturers.

Registered trademarks and trade names of INNEO Solutions GmbH: GENIUS TOOLS, Startup TOOLS, INNEO